

DRAPE/VACUUM FORMING AND COMPACTION SYSTEMS



**Designed to increase the efficiency of the
preform compaction process**

Marc Ruddy Thimon
Sales & Business Development Manager
Cell: (682) 551-8569

Composite Alliance Corp.
6060 N. Central Expressway, suite 500
Dallas TX 75206

CHARACTERISTICS

Composite Alliance Corp has responded to the market demands for a greater variety of industrial processes and solutions to optimize the fabrication of composite components. The drape forming, vacuum forming and compaction tables are designed to increase the efficiency of the fabrication process and the quality of the components. They satisfy from the most basic to the most sophisticated requirements.

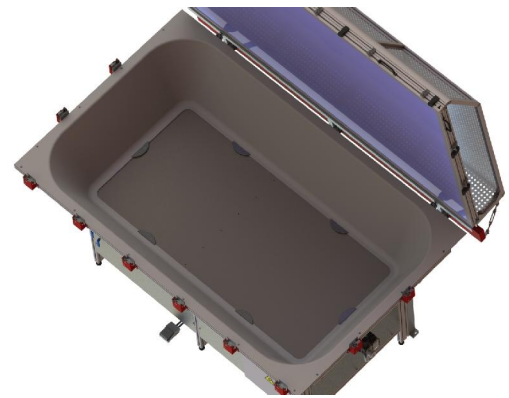


The basic equipment offers:

- A choice among multiple heating systems such as: heating plate or IR
- A membrane with 250% elongation
- An aluminum frame structure
- Manual opening and clamping system
- A vacuum system that allows 250 mbars/3.6 PSI

Advantages:

- Simplicity of use
- Reliable and repeatable performance
- No fiber wrinkling
- Cost-effective solution
- Versatility of use



Sizes:

| PLATE SIZE | MM | INCHES |
|-------------------|-----------|----------------|
| TME/CT-210 | 2000X1000 | 78.74 X 39.37 |
| TME/CT-410 | 4000X1000 | 157.48 X 39.37 |
| TME/CT-415 | 4000X1500 | 157.48 X 59.05 |
| TME/CT-610 | 6000X1000 | 236.22 X 39.37 |
| TME/CT-615 | 6000X1500 | 236.22 X 59.05 |

Options:

- Membrane with elongation of 600%
- Automatic clamping system
- Automatic opening and closing system
- Supervision easy-to-use touch screen interface to control the complete cycle
- Vacuum system 50 mbars/0,7 PSI
- Compaction trough for big size tooling